

# GI 275 Quick Reference Card

## Power On



To power on the GI 275 without aircraft power, push and release the Inner Knob.

## GI 275 Touch Buttons

Touch Buttons have a raised appearance and allow touch selection.

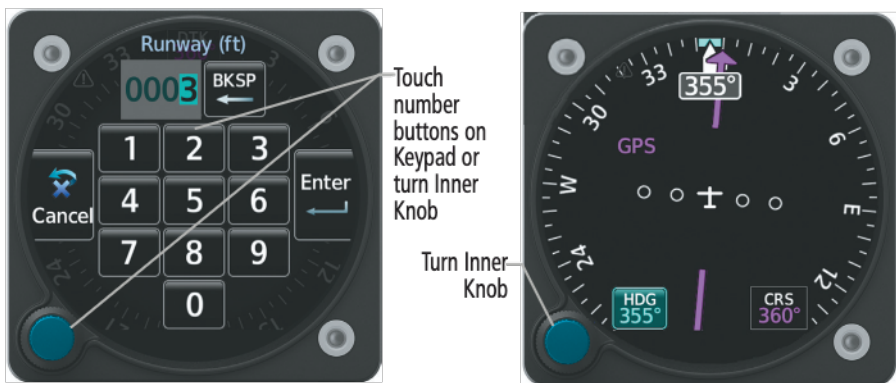
Cyan border or highlight indicates a button is active and ready to receive pilot input, including but not limited to data field adjustments, sync functions, or accessing further options.




## GI 275 Data Entry


Touch the number buttons or turn the Inner Knob to adjust the keypad data field.

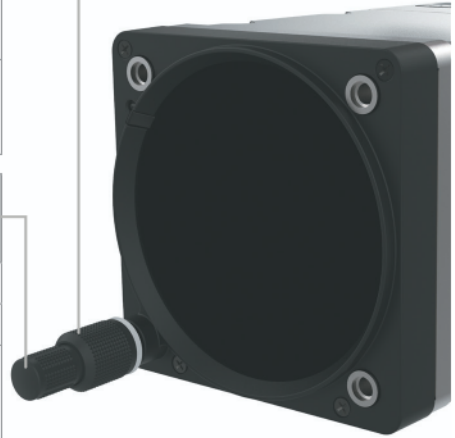
Turn the Inner Knob to adjust an active data field on any main page (ADI Page, CDI Page, HSI Page, etc).



## GI 275 Knob Functions

Outer Knob 	
Turn Clockwise	Change page to right Scroll down menu fields Move data field cursor to right
Turn Counter Clockwise	Change page to left Move data field cursor to left Scroll up menu fields

Inner Knob 	
Turn Clockwise	Adjust data field (increase)
Turn Counter Clockwise	Adjust data field (decrease)
Push	Power on Select highlighted field Sync active field
Push and Hold	Display/Remove menu



## GI 275 Touch Functions

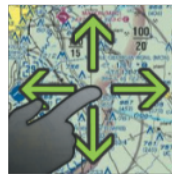
### Display Menu

Swipe from bottom of screen to display menu



### Panning

Touch any map or chart to activate panning mode  
Touch and drag finger on screen to pan the map



### Scroll

Touch and scroll while holding finger on screen for smooth, slow scrolling  
Touch, scroll, and release finger from screen to scroll quickly.



### Zoom

Pinch in to zoom out on any map or chart  
Stretch (pinch out) to zoom in on any map or chart

